

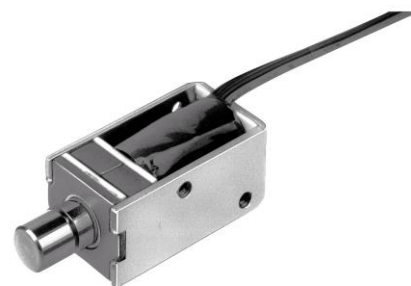
Popular 16x30x14mm Self-Latching Type Solenoids DL1630G Series

Features

- ◇ General use with 16x30x14mm dimension.
- ◇ Self-latching is available at zero power consumption by installing permanent magnet.

Applications

- ◇ Key lock



Products Line (at 20degree Celsius)

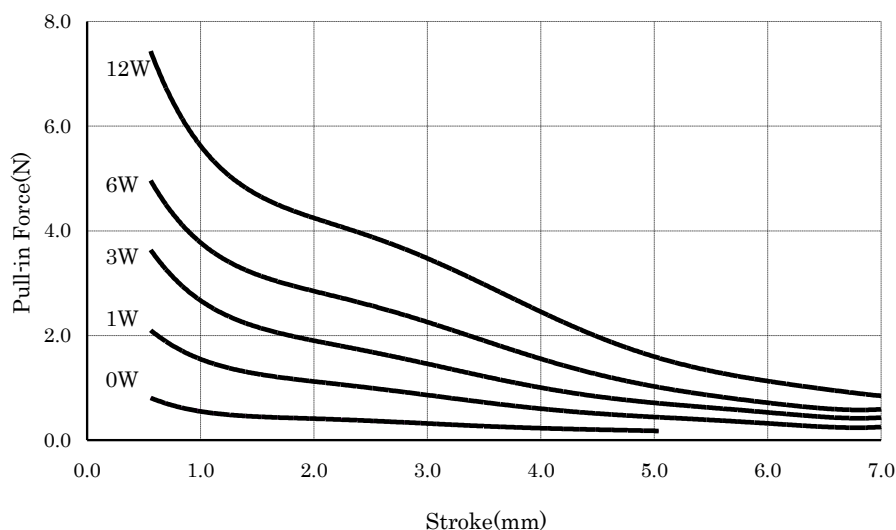
| No | Products No. | Rated voltage | Coil resistance | Rated duty | Holding force Pull-in force (initial) | Coil Temperature rise |
|----|--------------|---------------|---------------------|---|--|---|
| 1 | DL1630G-006W | 10.5 V DC | 6.5 ohm 12.5 ohm | ON Time 0.1sec max. OFF Time 0.9sec min. | 6.4N min. <0V DC> <Stroke 0mm> 3.0N min. <9.9V DC> <Stroke 3mm> 0.49N min. <8VDC> <Stroke 0mm> | 60deg C max. <10.5V DC> <ON 0.1sec OFF 0.9sec> |

Typical Specifications

| Item | Specifications |
|-----------------------------|-------------------------------|
| Insulation resistance | 50 megohm min. 250V DC |
| Withstand voltage | 250V AC for 1 min. |
| Insulation grade | JIS E class(except lead wire) |
| Operating life | 10,000 cycles |
| Operation temperature range | 0 to +55 degree Celsius |
| Storage temperature range | +20 to +70 degree Celsius |

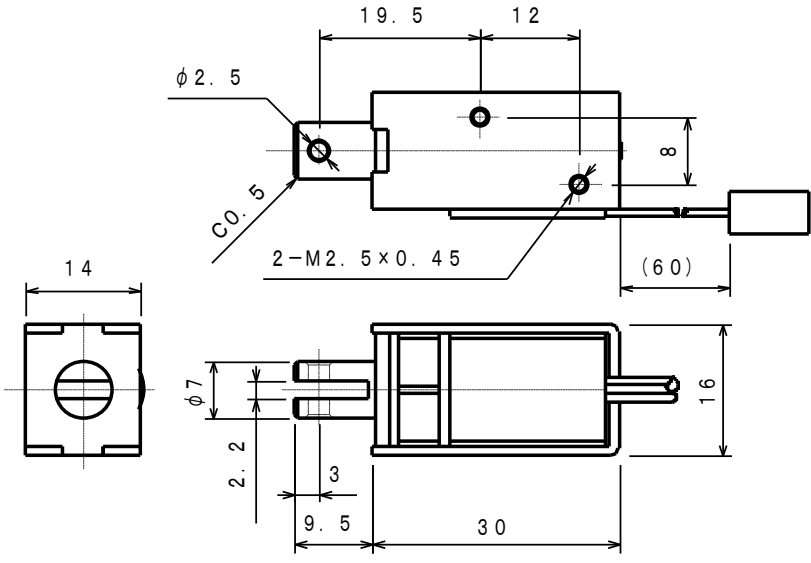
Pull-in Force (Typical value) <at 20 degree Celsius initial>

1N=102gf



Dimensions

Unit: mm

| No | Style |
|----|--|
| 1 | <p data-bbox="209 277 391 304">DL1630G-006W</p>  <p data-bbox="204 1122 549 1149">The dimensions at stroke 0mm</p> |

Notes

1. The appearance and specifications of the product may be modified without prior notice to improve its performance.
2. This catalogue shows only outline specifications. When using the product, please obtain formal specifications.
3. Please see appendix [How to select Solenoid].
4. Please confirm the performance on actual operation by simulation with actual environments for high reliability.
5. Please avoid the storage in dusty environment. If you store the products for a long time, do not keep open the package.
6. Please take care for the usage in high humid atmosphere and design in to meet the operating condition of the devices, for the coil resistance increases 0.4%/degree Celsius depending on the operating ambient temperature.
7. Please feel free to contact us for the models with other coil resistances, head types of movable iron core.